



EZCURRA

Security

Innovation

Quality



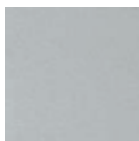
**Blocking Device
High Security Locks**

Finishes

golden
enamel



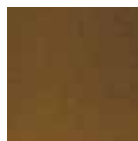
matt chrome
enamel



black
enamel



bronze
enamel



nickel
enamel



silver
aluminium



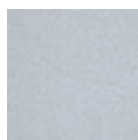
golden
aluminium



stainless
steel



chrome



brass



Made in Spain

COMPLETELY MADE IN SPAIN

Ezcurra is appointed as CE/UE
Authorised Exporter No. ES/20/0120/12

Index



Blocking Device High Security Locks

SB-2000B ____ page 4

SB-2004B ____ page 4

SB-2010/3 ____ page 5

SB-2014/3 ____ page 5

SB-2075/3 ____ page 6

SB-2074/3 ____ page 6

SB-3040 ____ page 7

SB-3044 ____ page 7

SB-9040 ____ page 8

SB-9044 ____ page 8



Master Keying System ____ page 9



High Security Cylinders

DS-15 ____ page 10

DS-20 ____ page 10

K-20 ____ page 11

K-30 ____ page 11

SEA-3 ____ page 12

SEA-23 ____ page 12



Escutcheons

420-P ____ page 13

424-P ____ page 13

425-P ____ page 13

430-P ____ page 13



Security Set ____ page 14



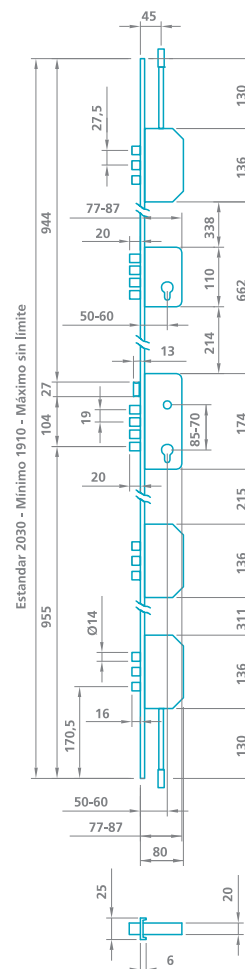
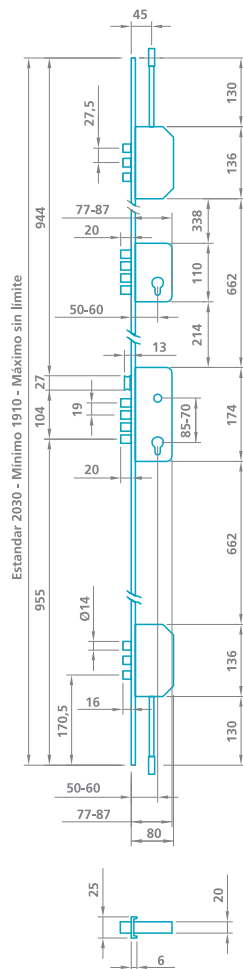
Accessories ____ page 15

Apart from their **BLOCKING DEVICE**, every high security lock in this catalogue feature an **ANTIBREACKAGE SYSTEM** which effectively protects the central steel bolts from being forced backwards

This system is **PATENTED** and **CERTIFIED** by an official approved center

SB-2000B

SB-2004B



- BLOCKING DEVICE lock with ANTIBREACKAGE SYSTEM
- Acts as SERVICE KEY
- Round steel bolts
- Reversible latch
- 2 turns
- Front plate profile: 25 x 6 mm.
- Cylinders: DS-15, DS-10, K-20, K-30, SEA
- Backsets: 50/60 mm. Centres: 85/70 mm.
- Front plate finishes:

	Height (m.)
Brass / Chromed brass	2,03
"U" brass / "U" chromed brass	2,03
Golden / Silver finish aluminium	2,03 2,11
Golden / Matt Chrome / Nickel / Bronze / Black enamel on steel	2,03 2,11
Stainless steel / Chrome on steel	2,03 2,11
- Escutcheons: 424-P 425-P
420-P 430-P
- Striking plates: Short pieces
Long pieces: 30/40/45 mm.

Note: SB-2000B/3 has no upwards / downwards locking points

- BLOCKING DEVICE lock with ANTIBREACKAGE SYSTEM
- Acts as SERVICE KEY
- Round steel bolts
- Reversible latch
- 2 turns
- Front plate profile: 25 x 6 mm.
- Cylinders: DS-15, DS-10, K-20, K-30, SEA
- Backsets: 50/60 mm. Centres: 85/70 mm.
- Front plate finishes:

	Height (m.)
Brass / Chromed brass	2,03
Golden / Silver finish aluminium	2,03 2,11
Golden / Matt Chrome / Nickel / Bronze / Black enamel on steel	2,03 2,11
Stainless steel / Chrome on steel	2,03 2,11
- Escutcheons: 424-P 425-P
420-P 430-P
- Striking plates: Short pieces
Long pieces: 30/40/45 mm.

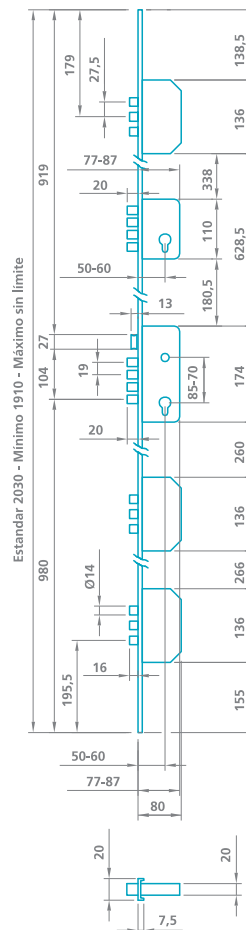
Note: SB-2000B/3 has no upwards / downwards locking points

Technical drawing of a metal profile, labeled "Estandar 2030 - Mínimo 1910 - Máximo sin límite". The drawing shows a side view of the profile with various dimensions and features. The total length is 1910 mm. Key dimensions include: 980 mm (overall length), 104 mm (width), 27 mm (flange width), 19 mm (flange thickness), 20 mm (flange width), 136 mm (flange width), 179 mm (flange width), 27.5 mm (flange width), 77-87 mm (flange width), 50-60 mm (flange width), 180.5 mm (flange width), 110 mm (flange width), 338 mm (flange width), 138.5 mm (flange width), 628.5 mm (flange width), 174 mm (flange width), 662 mm (flange width), 155 mm (flange width), 136 mm (flange width), 195.5 mm (flange width), 16 mm (flange width), 50-60 mm (flange width), 77-87 mm (flange width), 80 mm (flange width), 20 mm (flange width), 10 mm (flange width), 20 mm (flange width).

- [illegible]

- 5

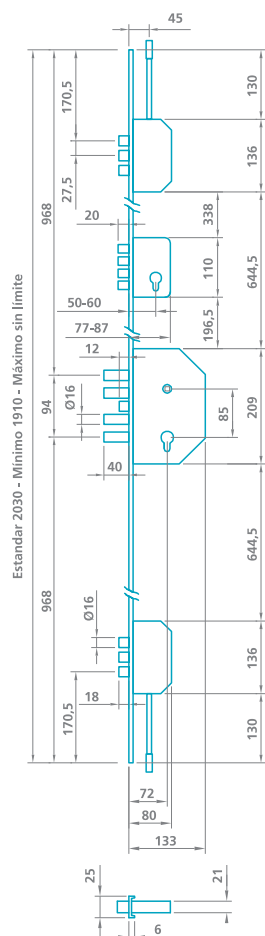
SB-2074/3



- **BLOCKING DEVICE** lock with **ANTIBREACKAGE SYSTEM**
- Acts as **SERVICE KEY**
- Round steel bolts
- Reversible latch
- 2 turns
- Front plate profile: 20 x 7'5 mm.
- *Cylinders:* DS-15, DS-10, K-20, K-30, SEA
- *Backsets:* 50 / 60 mm.
- *Centres:* 85 / 70 mm.
- Front plate finishes:

	Height (m.)
Golden / Matt chrome / Nickel / Bronze / Black enamel on steel	2,03 2,11
Stainless steel / Chrome on steel	2,03 2,11
- Escutcheons: 424-P 425-P
420-P 430-P
- Striking plates: Short pieces
Long pieces: 40 / 45 mm.

SB-3040



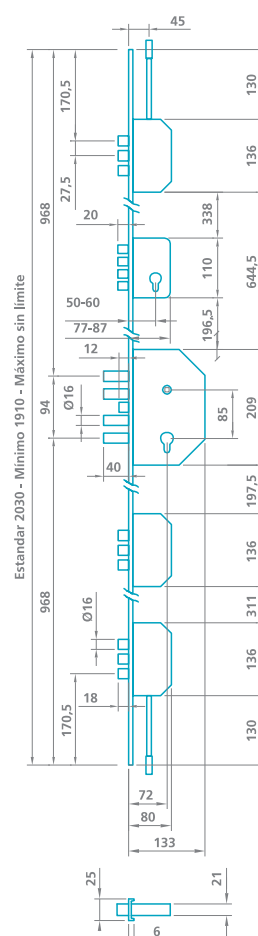
- BLOCKING DEVICE lock with ANTIBREACKAGE SYSTEM
- Acts as SERVICE KEY
- Round steel bolts Ø 16 mm.
- Reversible latch
- 4 turns
- Closed cases
- Front plate profile: 25 x 8 mm.
- Front plate "Z" profile available in aluminium or enamel on steel
- Cylinders: DS-15, DS-10, K-20, K-30, SEA
- Backset: 72 mm.
- Centres: 85 / 70 mm.
- Front plate finishes:

Brass / Chromed brass	2,03
Golden / Silver finish aluminium	2,03
Golden / Matt Chrome / Nickel / Bronze / Black enamel on steel	2,03 2,11
Stainless steel / Chrome on steel	2,03 2,11
Golden / Silver finish aluminium "Z"	2,03 2,11
Golden / Matt Chrome / Nickel / Bronze / Black enamel "Z"	2,03 2,11

- Escutcheons: 424-P 425-P
420-P 430-P
- Striking plates: Short pieces
Long pieces: 40 / 45 mm.

Note: SB-3040/3 has no upwards / downwards locking points

SB-3044



- BLOCKING DEVICE lock with ANTIBREACKAGE SYSTEM
- Acts as SERVICE KEY
- Round steel bolts Ø 16 mm.
- Reversible latch
- 4 turns
- Closed cases
- Front plate profile: 25 x 8 mm.
- Front plate "Z" profile available in aluminium or enamel on steel
- Cylinders: DS-15, DS-10, K-20, K-30, SEA
- Backset: 72 mm.
- Centres: 85 / 70 mm.
- Front plate finishes:

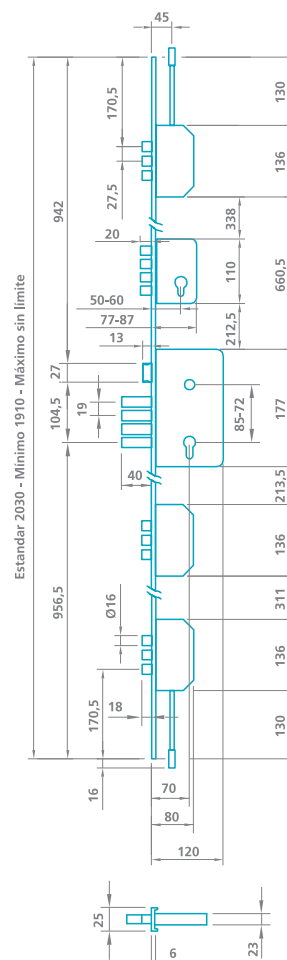
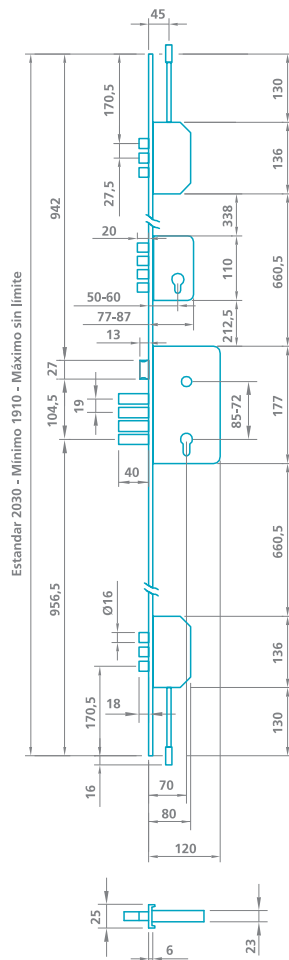
Brass / Chromed brass	2,03
Golden / Silver finish aluminium	2,03
Golden / Matt Chrome / Nickel / Bronze / Black enamel on steel	2,03 2,11
Stainless steel / Chrome on steel	2,03 2,11
Golden / Silver finish aluminium "Z"	2,03 2,11
Golden / Matt Chrome / Nickel / Bronze / Black enamel "Z"	2,03 2,11

- Escutcheons: 424-P 425-P
420-P 430-P
- Striking plates: Short pieces
Long pieces: 40 / 45 mm.

Note: SB-3044/3 has no upwards / downwards locking points

SB-9040

SB-9044



- BLOCKING DEVICE lock with ANTIBREACKAGE SYSTEM
 - Acts as SERVICE KEY
 - Round steel bolts Ø 16 mm.
 - Reversible latch
 - 4 turns
 - Closed cases
 - Front plate profile: 25 x 8 mm.
 - Cylinders: DS-15, DS-10, K-20, K-30, SEA
 - Backset: 70 mm.
 - Centres: 85 / 70 mm.
 - Front plate finishes:
- | | Height (m.) |
|--|--------------|
| Brass / Chromed brass | 2,03 |
| Golden / Matt Chrome / Nickel / Bronze / Black enamel on steel | 2,03
2,11 |
| Stainless steel / Chrome on steel | 2,03
2,11 |
- Escutcheons: 424-P 425-P
420-P 430-P
 - Striking plates: Short pieces
Long pieces: 40 / 45 mm.

Note: SB-9040/3 has no upwards / downwards locking points

- BLOCKING DEVICE lock with ANTIBREACKAGE SYSTEM
 - Acts as SERVICE KEY
 - Round steel bolts Ø 16 mm.
 - Reversible latch
 - 4 turns
 - Closed cases
 - Front plate profile: 25 x 8 mm.
 - Cylinders: DS-15, DS-10, K-20, K-30, SEA
 - Backset: 70 mm.
 - Centres: 85 / 70 mm.
 - Front plate finishes:
- | | Height (m.) |
|--|--------------|
| Brass / Chromed brass | 2,03 |
| Golden / Matt Chrome / Nickel / Bronze / Black enamel on steel | 2,03
2,11 |
| Stainless steel / Chrome on steel | 2,03
2,11 |
- Escutcheons: 424-P 425-P
420-P 430-P
 - Striking plates: Short pieces
Long pieces: 40 / 45 mm.

Note: SB-9044/3 has no upwards / downwards locking points

Master keying system

EZCURRA has developed a masterkeying system that provides Comfort, Performance and Security. For comfort, Ezcurra's master keying system affords the possibility to reduce the usual bunch of keys to only one, able to open the most commonly used locks and cylinders. High Performance and Security, due to the precision and excellent technical features of our cylinders, which allow all kind of keying systems, from the simple master key suite to the grand master key one.

In this way, house entrance doors, post boxes, elevators, garages, desk, and so on, all can be easily masterkeyed to user's convenience.

Nowadays housing, condominiums, offices, hospitals and companies of any size enjoy the quality and security of EZCURRA's master keying system.



Communal Entrance Master keying

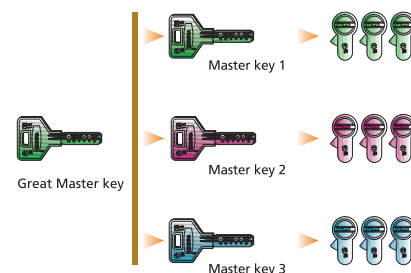
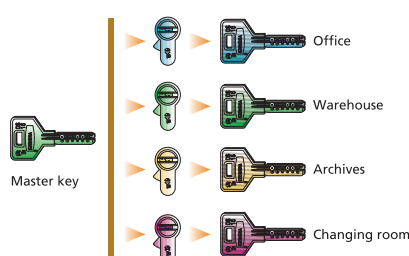
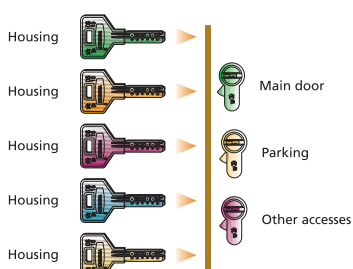
Group of Locks each one having its own individual key that gives access to its own door and all communal services i.e.: main entrance, garage, lift, terraces, storerooms, etc.

Simple Master keying

Group of Locks each one having its own individual keys, which opens only that door, and a Master key which opens all the locks. Suitable for offices, warehouses, etc.

Group Master keying

Several independent groups of Locks each one having its own Master key, and a Grand Master key, which opens all the doors in the locking plan. Suitable for hotels, administrative buildings, schools, companies, etc.

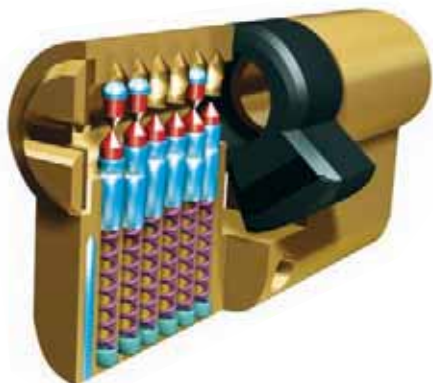


DS-15

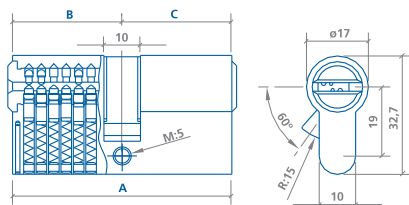
DS-10

Common features

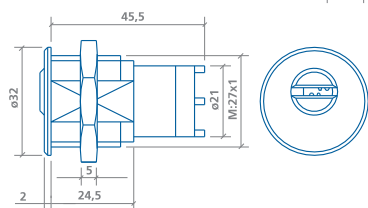
- High security double cylinder with european profile.
- Anti - picklock profile.
- Front **drilling** resistant.
- **High keying** possibilities.
- Wide range of sizes, finishes and models: knob cylinders, half-cylinders, switch cylinders, double clutch cylinders, etc.
- *Finishes:* Brass/Chrome
Matt chrome/Black
- **COMPLETELY MADE IN SPAIN**
- Cylinder complies with certification CE UNE-EN 1303:2006



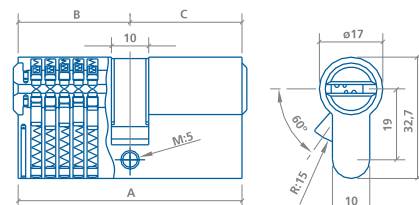
Cylinder DS-15



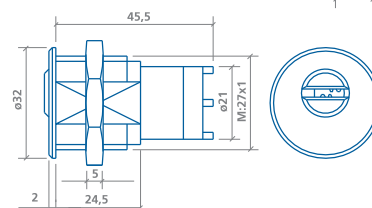
Switch cylinder DS-15



Cylinder DS-10



Switch cylinder DS-10



- Double fitting 9 pins in two rows: 3 up + 6 down.
- Front drilling resistance by tempered steel bars.
- 5 Reversible dimple keys on chromed brass.

- Double fitting 10 pins in two rows (5 up + 5 down) + 1 steel ball on the side.
- Front drilling resistance by tempered steel bars in tube and drum.
- 5 Reversible dimple keys on nickel silver.



sizes

A	B	C	A	B	C	A	B	C	A	B	C	A	B	C
60 mm. (30-30)			● 75 mm. (35-40)			85 mm. (30-55)			90 mm. (30-60)			● 100 mm. (40-60)		
65 mm. (30-35)			● 80 mm. (40-40)			● 85 mm. (35-50)			● 90 mm. (35-55)			● 110 mm. (55-55)		
● 70 mm. (35-35)			80 mm. (30-50)			● 90 mm. (45-45)			● 95 mm. (40-55)			● 110 mm. (50-60)		
70 mm. (30-40)			● 80 mm. (35-45)			● 90 mm. (40-50)			● 100 mm. (50-50)			● 120 mm. (60-60)		
75 mm. (30-45)														

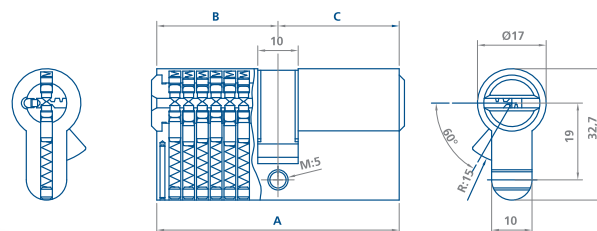
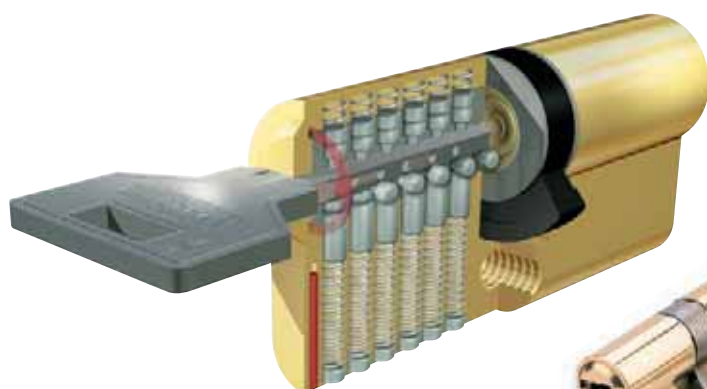
● Available in double clutch version.

K-20

K-30

Common features

- High security cylinder with **17 pins** (12 in two rows + 5 in an extra side row) acting to achieve a sophisticated security system which increases exponentially its **master keying** possibilities.
- **Anti-picklock** and **antibumping** european profile.
- **Front drilling resistance** by tempered steel ring in the drum and tempered steel bar in the tube.
- Wide range of sizes and versions: knob cylinders, double clutch cylinders, half cylinders, switch cylinders, etc.
- Finishes: Brass / Chromed brass / Matt chrome / Black
- **COMPLETELY MADE IN SPAIN**
- Cylinder complies with certification CE UNE-EN 1303:2006



- Triple fitting 17 brass pins in 2 rows of 6 pins + 1 extra row of 5 pins on the side.
- 5 Reversible dimple keys on chromed brass.

- Triple fitting 17 STAINLESS STEEL pins in 2 rows of 6 pins + 1 extra row of 5 STAINLESS STEEL pins on the side.
- 5 Reversible dimple keys on nickel silver.



sizes

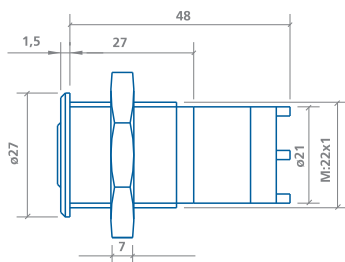
A	B	C	A	B	C	A	B	C	A	B	C	A	B	C
60 mm. (30-30)			● 75 mm. (35-40)			85 mm. (30-55)			90 mm. (30-60)			● 100 mm. (40-60)		
65 mm. (30-35)			● 80 mm. (40-40)			● 85 mm. (35-50)			● 90 mm. (35-55)			● 110 mm. (55-55)		
● 70 mm. (35-35)			80 mm. (30-50)			● 90 mm. (45-45)			● 95 mm. (40-55)			● 110 mm. (50-60)		
70 mm. (30-40)			● 80 mm. (35-45)			● 90 mm. (40-50)			● 100 mm. (50-50)			● 120 mm. (60-60)		
75 mm. (30-45)														

● Available in double clutch version.

SEA 23 / SEA 3

EUROPROFILE

Switch cylinder



europ profile sizes

A	B	C
60 mm.	(30-30)	
65 mm.	(30-35)	
70 mm.	(35-35)	
70 mm.	(30-40)	
75 mm.	(35-40)	
75 mm.	(30-45)	
80 mm.	(40-40)	
80 mm.	(30-50)	
80 mm.	(35-45)	
85 mm.	(30-55)	
85 mm.	(35-50)	
85 mm.	(40-45)	
90 mm.	(30-60)	
90 mm.	(40-50)	
95 mm.	(40-55)	
100 mm.	(50-50)	
100 mm.	(30-70)	
100 mm.	(40-60)	
110 mm.	(30-80)	
110 mm.	(40-70)	
110 mm.	(50-60)	
120 mm.	(60-60)	
120 mm.	(30-90)	
120 mm.	(40-80)	
120 mm.	(50-70)	

Security cards

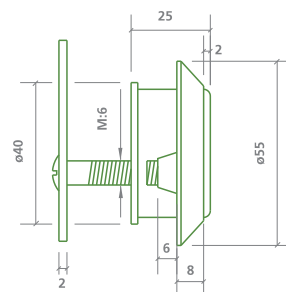


- High security double cylinders SEA-23 and SEA-3.
- Front drilling resistant by tempered steel bars.
- Five reversible nickelsilver keys.
- It combines a double row of suspended pins with an extra row at the flank, performing a perfect multilock system.
- High keying possibilities.
- Wide range of sizes, finishes and models: knob cylinders, half-cylinders, switch cylinders, etc.
- *Finish: Chrome*

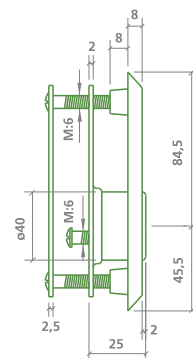
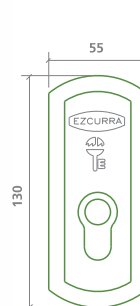
- Useful protective escutcheons for our whole range of high security european profile locks.
- Specially designed to avoid grasping actions.
- *Finishes:* Golden / Matt Chrome / Nickel / Bronze / Black enamel / Chrome

Stainless steel in 420-P, 425-P and 430-P

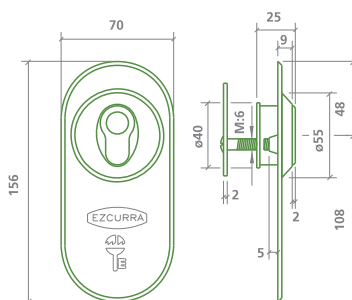
- Including three pieces: *escutcheon*, *internal plate* and *tempered steel cylinder's cap* with an edge that protects the cylinder from being extracted.



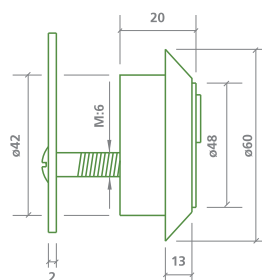
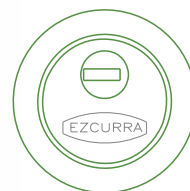
- Double security escutcheon.
- Including three pieces: *escutcheon*, *internal plate* and *tempered steel cylinder's cap* with an edge that protects the cylinder from being extracted.
- The *escutcheon* is fastened through the *internal plate* by a strong screw fixing system. The *cylinder's cap* is fixed by two screws through the lock.
- Available *steel plate* to be placed between the lock and the door's armouring sheet which provides highest protection of the lock and the cylinder, and avoids taking the cylinder's cap out.
- Available *decorative plate*.



■ 420-P escutcheon plus decorative plate.



- Including three pieces: *tempered steel escutcheon, internal plate and brass cover.*
- Hidden cylinder.
- Available washers for exact assembly.
- *Decorative plate on request.*



The security set
made up of:

- **Z profile lock**
- **Angular striking plate**
- **Security hinge**
- **Crosspieces**

provides the door structure with
great strength, achieving a very
sturdy security system.





Long angular striking plate

45 mm.
x 2,03 / 2,11 m.



Hinge

U+L shaped reversible SECURITY HINGE with 4 bearings, available in the following finishes and sizes:

Golden / Matt Chrome / Nickel
Bronze / Black enamel on Steel

Width	Height
40 mm.	2.03 m.
45 mm.	2.03 / 2.11 m.



Crosspieces

Security crosspieces and angular profiles available in following finishes and sizes:

Golden / Matt Chrome / Nickel / Bronze
Black enamel on steel

1 m. x 40 / 45 mm.

Golden / Silver finish aluminium

90 cm. / 1 m. x 40 / 45 mm.

M-type
Lever protection box



V-type
Lever protection box



Boxes for lever protection

M-type

Protects central as well as accessory bolts from lever actions

V-type

Apart from protecting the central bolts from lever actions, it is provided with a special device to fit the latch.

Ezcurra-Esko, S.A.

P.O.Box 5
20540 Escoriaza. (Guipúzcoa) Spain



Tel.: +34 943 71 51 00

Fax: +34 943 71 41 00

e-mail: ezcurra@ezcurra.com • www.ezcurra.com