



**EZCURRA**

*S*ecurity

*I*nnovation

*Q*uality

**Special Security Locks for Armored Doors**  
— with Antibreakage System —

# Index



## One Point Double Security Locks

**70.B.00** page 4

**70.C.00** page 4

**70.D.00.F** page 5

**70.M.00.F** page 5



## Multipoint Double Security Locks

**70.B.00.FL** page 6

**70.C.00.FL** page 6

**70.D.00.FL** page 7

**70.M.00.FL** page 7



## Cylinders

**DS-15** page 8

**DS-10** page 8

**Borjas** page 9



## Accessories

page 10

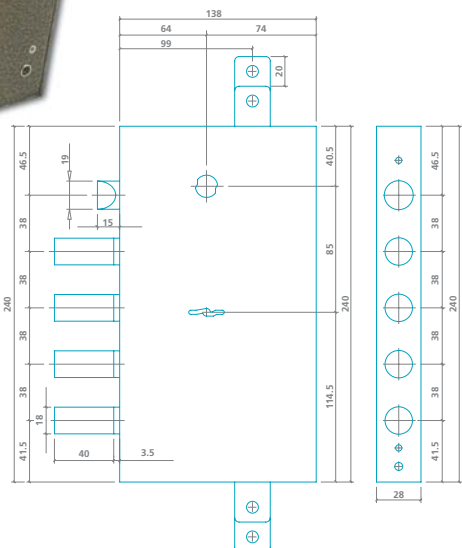
## New

Every high security lock in this catalogue features an ANTIBREAKAGE SYSTEM, which effectively protects the central steel bolts from being forced backwards.

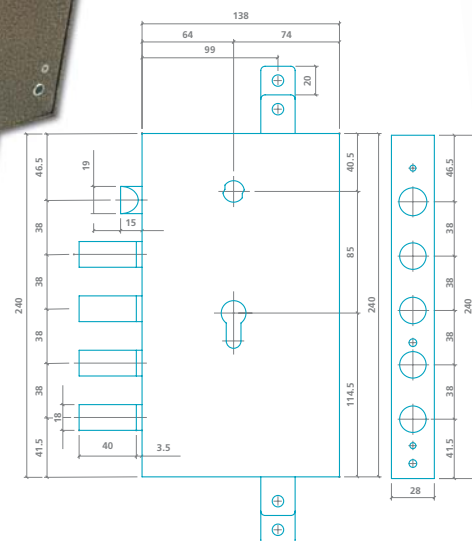
This system is PATENTED and CERTIFIED by an official aproved centre.



**70.C.00**



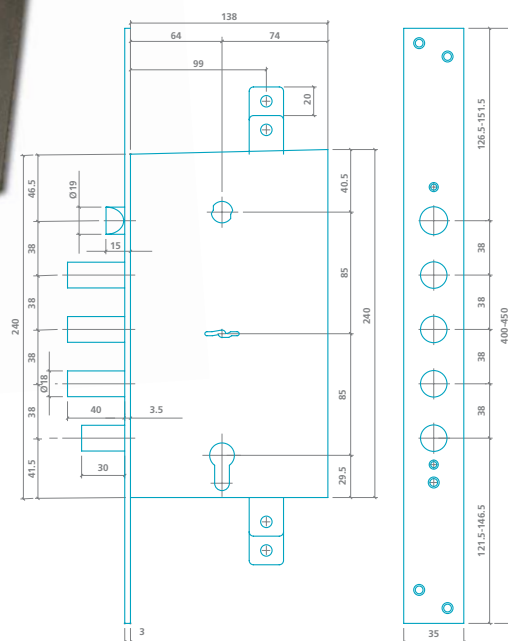
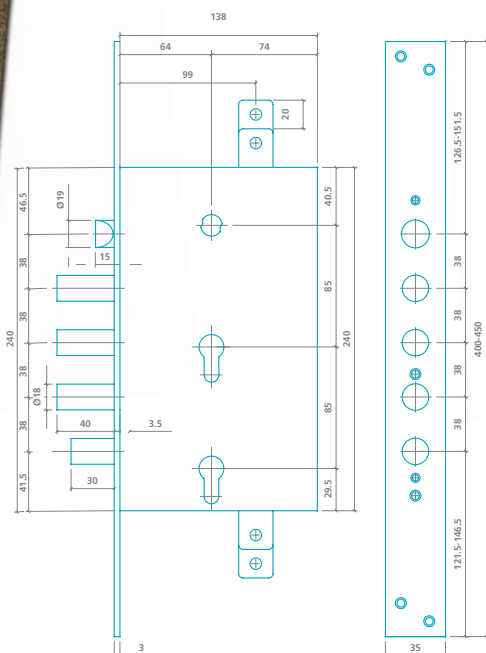
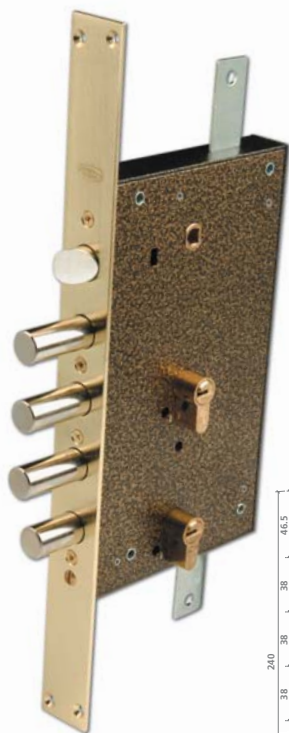
- 



- 4



# 70.D.00.F 70.M.00.F

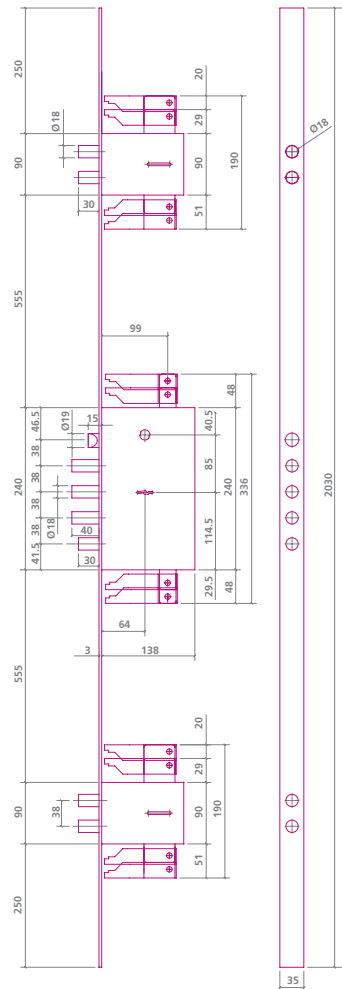


- ANTIBREAKAGE system
- Special Security Double Cylinder Lock; lower cylinder block the lock
- 2 x High Security Cylinder DS-15, DS-10
- Round steel bolts Ø18 mm.
- 4 Turns
- Reversible Latch
- Backset 64 mm.
- Closed case
- Front & Striking plate 400 x 35 mm. available
- Fitting up & down locking points
- Opposite side locking point available
- *Finishes:*
  - Brass
  - Chromed brass
- Security Escutcheon

- ANTIBREAKAGE system
- Special Security Lever & Cylinder Lock
- Multifunction Locking system:
  - Main system by 6 independent lever tumblers
  - Secondary system by High Security Cylinder DS-15 / DS-10 with blocking function
- Lever block protected by 3 mm. thick steel plate
- Round steel bolts Ø18 mm.
- 4 Turns
- Reversible Latch
- Backset 64 mm.
- Closed case
- Front & Striking plate 400 x 35 mm. available
- Fitting up & down locking points
- Opposite side locking point available
- *Finishes:*
  - Brass
  - Chromed brass.
- Security Escutcheon

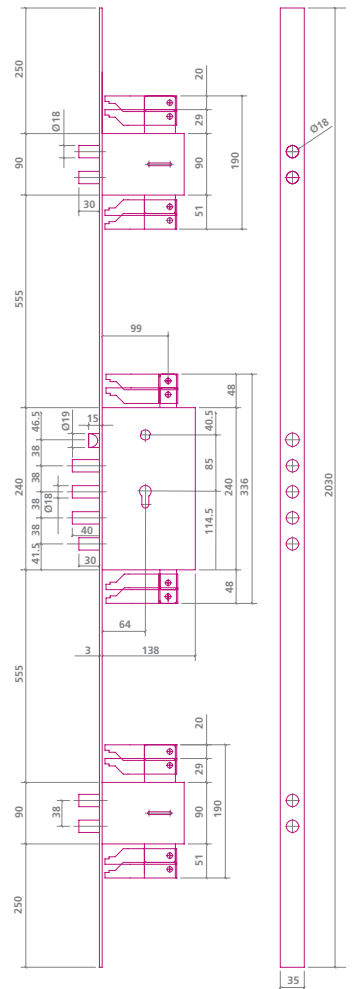
## 70.B.00.FL

## 70.C.00.FL



- ANTIBREAKAGE system
- Special Security Lever Lock by 6 independent lever tumblers
- Central + 2 auxiliaries locks
- Up & Down locking points
- Lever block protected by 3 mm. thick steel plate
- Round steel bolts Ø18 mm.
- 4 Turns
- Reversible Latch
- Backset 64 mm.
- Closed case
- Front plate profile 2030 x 35 x 3 mm.
- Opposite side locking point available
- Available version with Service Key
- *Finishes:*
  - Brass
  - Chromed brass
- Security Escutcheon

Ref.: 70.B.00.FL/3 without up & down locking points.

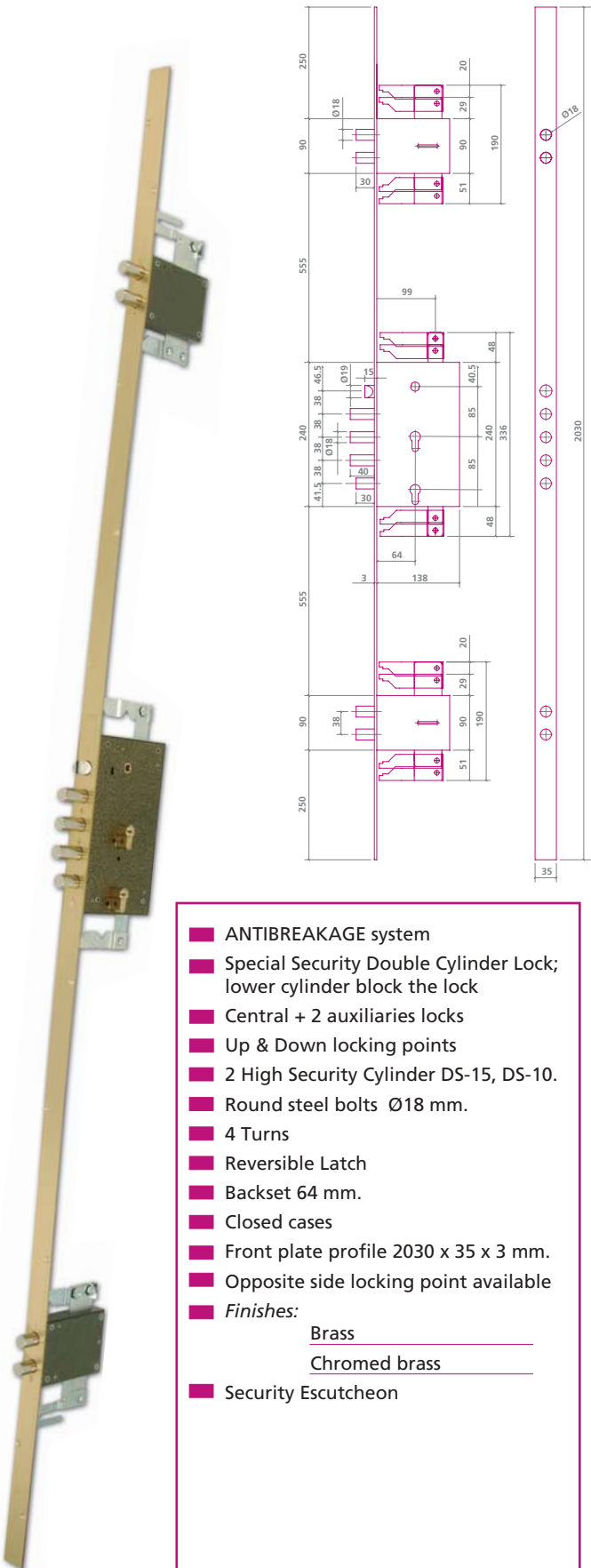


- ANTIBREAKAGE system
- Special Security Cylinder Lock
- Central + 2 auxiliaries locks
- Up & Down locking points
- High Security Cylinder: DS-15, DS-10
- Round steel bolts Ø18 mm.
- 4 Turns
- Reversible Latch
- Backset 64 mm.
- Closed cases
- Front plate profile 2030 x 35 x 3 mm.
- Opposite side locking point available
- *Finishes:*
  - Brass
  - Chromed brass
- Security Escutcheon

Ref.: 70.C.00.FL/3 without up & down locking points.

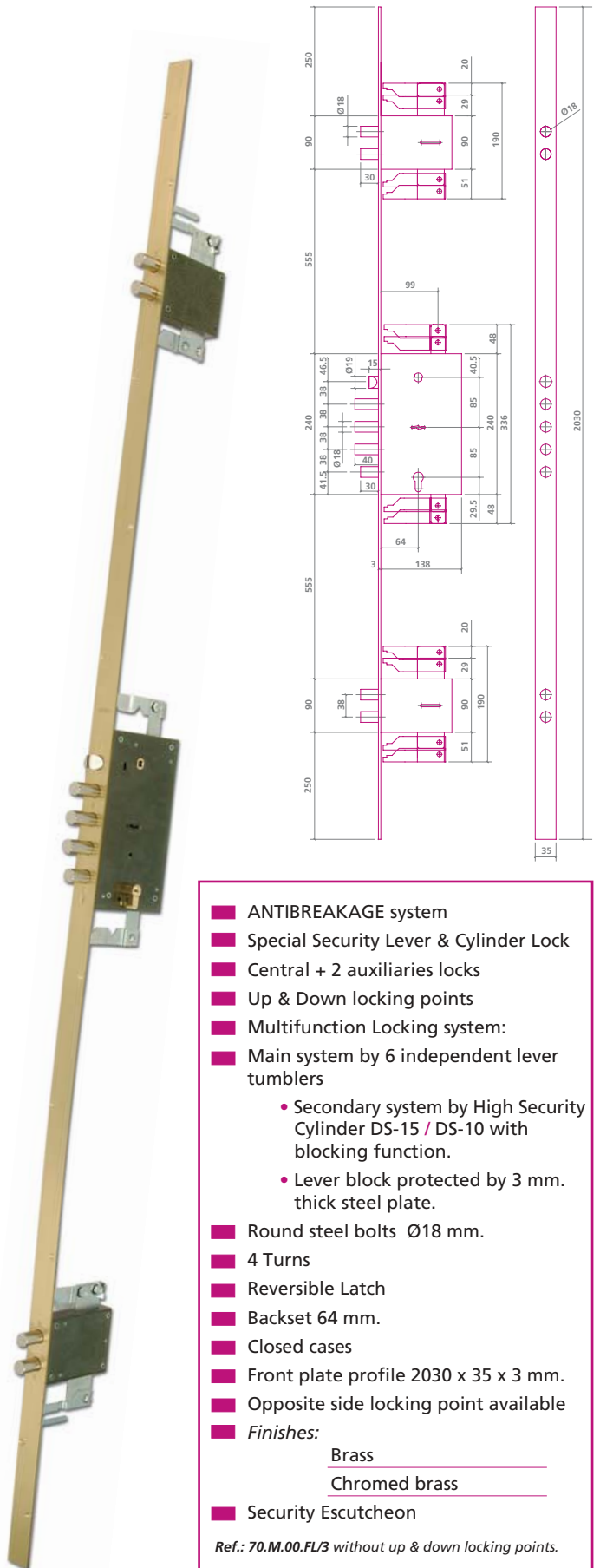
## 70.D.00.FL

## 70.M.00.FL



- ANTIBREAKAGE system
- Special Security Double Cylinder Lock; lower cylinder block the lock
- Central + 2 auxiliaries locks
- Up & Down locking points
- 2 High Security Cylinder DS-15, DS-10.
- Round steel bolts Ø18 mm.
- 4 Turns
- Reversible Latch
- Backset 64 mm.
- Closed cases
- Front plate profile 2030 x 35 x 3 mm.
- Opposite side locking point available
- *Finishes:*
  - Brass
  - Chromed brass
- Security Escutcheon

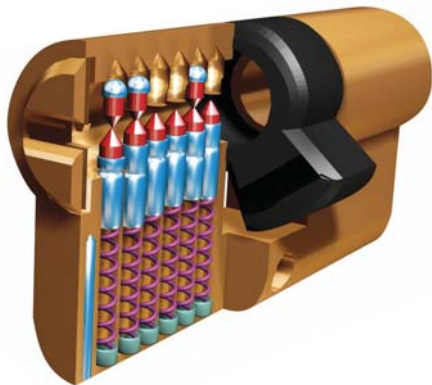
Ref.: 70.D.00.FL/3 without up & down locking points.



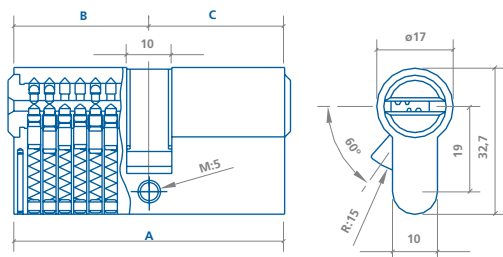
- ANTIBREAKAGE system
- Special Security Lever & Cylinder Lock
- Central + 2 auxiliaries locks
- Up & Down locking points
- Multifunction Locking system:
  - Secondary system by High Security Cylinder DS-15 / DS-10 with blocking function.
  - Lever block protected by 3 mm. thick steel plate.
- Round steel bolts Ø18 mm.
- 4 Turns
- Reversible Latch
- Backset 64 mm.
- Closed cases
- Front plate profile 2030 x 35 x 3 mm.
- Opposite side locking point available
- *Finishes:*
  - Brass
  - Chromed brass
- Security Escutcheon

Ref.: 70.M.00.FL/3 without up & down locking points.

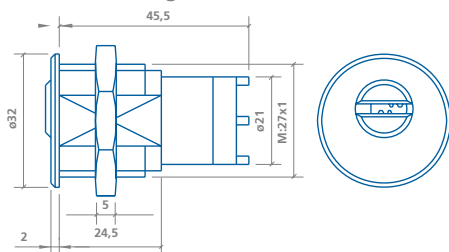
# DS-15



DS-15 Cylinder



DS-15 Switch cylinder



- High security double cylinder with european profile.
- Front drilling resistant by tempered steel bars.
- Anti - picklock profile.
- Five reversible chromed brass keys.
- Double fitting 6 pin cylinder offering excellent technical features.
- High keying possibilities.
- Wide range of sizes, finishes and models : knob cylinders, half-cylinders, switch cylinders, double clutch cylinders, etc.
- Computerized manufacturing process in highly technological machines.
- Finishes: Brass/Chrome  
Matt chrome

## Security cards



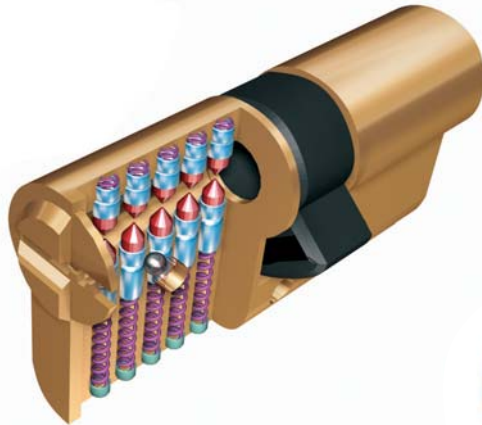
## sizes

A	B	C	A	B	C	A	B	C
60 mm. (30-30)			65 mm. (30-35)			• 70 mm. (35-35)		
70 mm. (30-40)			• 75 mm. (35-40)			• 80 mm. (40-40)		
80 mm. (30-50)			• 90 mm. (40-50)			90 mm. (30-60)		
• 100 mm. (50-50)			• 110 mm. (55-55)			• 110 mm. (50-60)		
• 120 mm. (60-60)								

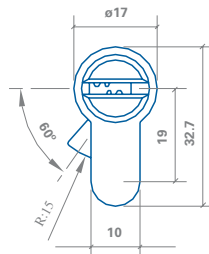
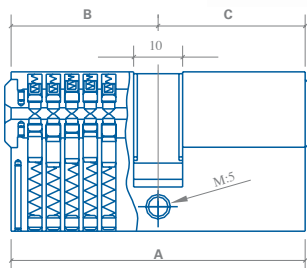
• Available in double clutch version.



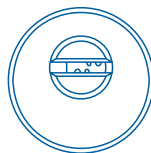
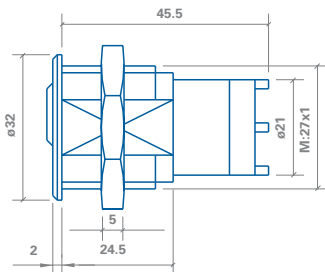
# DS-10



DS-10 Cylinder



DS-10 Switch cylinder



Security cards



- High security double cylinder with european profile.
- Front drilling resistant by tempered steel bars.
- Anti - picklock profile.
- Five reversible nickelsilver keys.
- Double pin row featuring on both sides, plus an extra locking device placed at the side, achieving a sophisticated security system.
- High keying possibilities.
- Wide range of sizes, finishes and models: knob cylinders, half-cylinders, switch cylinders, double clutch cylinders, etc.
- **Finishes:** Brass/Chrome  
Matt chrome

## sizes

A	B	C	A	B	C	A	B	C
60 mm. (30-30)			65 mm. (30-35)			• 70 mm. (35-35)		
70 mm. (30-40)			• 75 mm. (35-40)			• 80 mm. (40-40)		
80 mm. (30-50)			• 90 mm. (40-50)			90 mm. (30-60)		
• 100 mm. (50-50)			• 110 mm. (55-55)			• 110 mm. (50-60)		
• 120 mm. (60-60)								

• Available in double clutch version.





**S 70**  
**Lever set**



**S 70 key**  
**short and long**



**Borja**



**Cylinder**



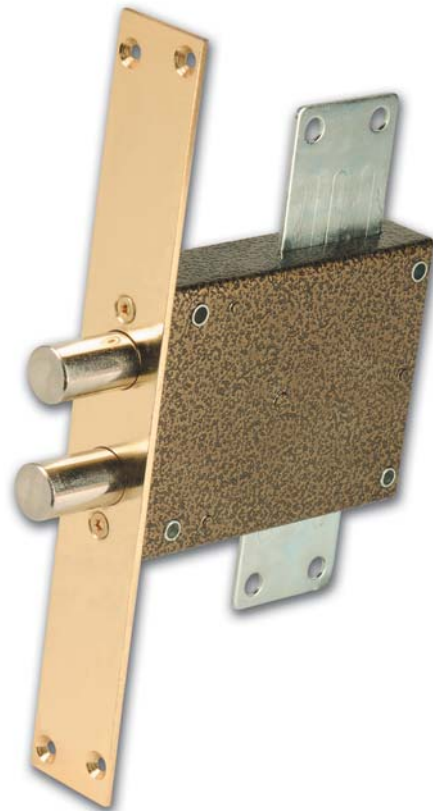
**Borja + cylinder**



**double cylinder**

## S 70 Escutcheons

## Key Guide plate set



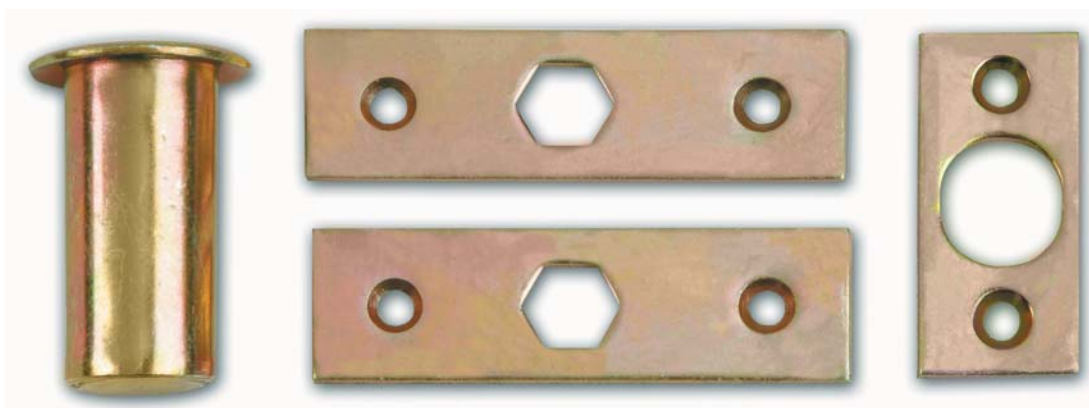
## Hooks



## Auxiliary locks

■ Front and Striking Plate available.

## Guides and Anti-dust protectors



**Ezcurra-Esko, S.A.**

P.O.Box 5  
20540 Escoriaza. (Guipúzcoa) Spain



Tel.: +34 943 71 51 00  
Fax: +34 943 71 41 00

---

e-mail: [ezcurra@ezcurra.com](mailto:ezcurra@ezcurra.com) • [www.ezcurra.com](http://www.ezcurra.com)